

NEWBURYPORT PUBLIC SCHOOLS



FRANCIS T. BRESNAHAN SCHOOL PRESCHOOL INFORMATION NIGHT

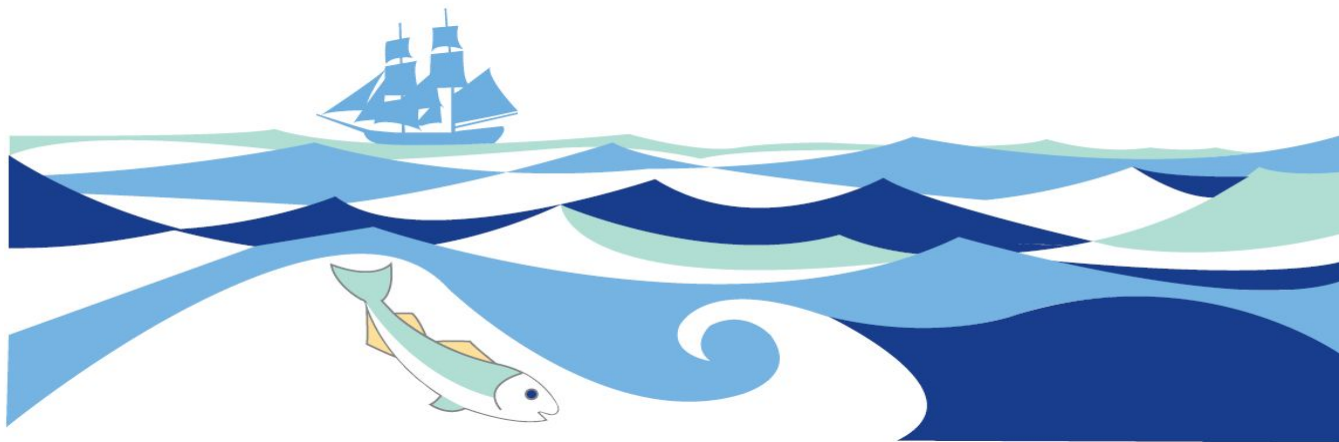
JANUARY 18, 2023

Agenda

6:00-6:05 p.m. Welcome and Introduction of Staff

6:05-6:30 p.m. General Session
Bresnahan School Information
Preschool Programming
Registration and Lottery Procedures

6:30-7:00 p.m. Tour Preschool Classrooms
Visit information tables



Who Are We?

Administration

Sean Gallagher - Superintendent

Wesley Pierce - Director of Student Services

Katie Vozeolas - District Nurse Leader

Bresnahan Administration

Jamie Sokolowski - *School Principal*

Theresa Fitzpatrick - *Special Education Coordinator*

Deb O'Connor - *Special Education Administrator*

Special Education Teacher

Anita Fowler

Chelsey Howell

Integrated Preschool Teachers

Suzanne Simon

Giovanna Foster

Tanasi Fahey

Karen Sullivan

Sam Maguire

SPED Service Providers

Jill Grelle - *Physical Therapist*

Pam Vecchio, Mary LaFleur, Jessica Marzi

Occupational Therapists

Candi Skiba and Julie Clemente

Speech and Language Pathologists

Zinta Gulens, Early Childhood Nurse

Rachel Brown - *Board Certified Behavior Analyst*

Colleen Wile and Melanie Manseau

School Adjustment Counselors

Holly Curtis - *School Social Worker*

Dr. Michele Clark - *School Psychologist*



Meet the Teachers



***Miss Sue** has worked in preschool for more than 25 years. She fell in love with the integrated model when her own children were in preschool as it taught them compassion for others and fostered a lifelong love of learning. She frequently reminds her students to never stop learning! An artist in a prior career, she employs creativity and fun in all aspects of her student's day.*

***Miss Giovanna** has been teaching in the Newburyport Public Preschool Program since 2011. She has a passion for social emotional learning. She provides an environment that encourages students to express their feelings as they work through conflict and setbacks. Miss Giovanna loves spending time at the beach.*



Meet the Teachers



***Miss Karen** has been teaching preschool for 16 years and can't imagine teaching any other grade. She loves the imagination, creativity, curiosity and laughter of these youngest learners. Miss Karen is proudly a crazy cat lady and yoga enthusiast.*

***Miss Tanasi** has been teaching in the Newburyport Public Preschool Program since 2013. She has a passion for preschool aged child development and loves seeing the growth of all her students each year! Her fun fact is she enjoys having "Miss T's Dance Parties" and dancing to Best Day of my Life!*



***Miss Sam** has been teaching in the Newburyport Public Preschool Program since 2016. She has always loved working with children of all ages, but especially has a passion for teaching preschool because it's so much fun learning through play! One the weekends you may spot Miss Sam walking on the rail trail.*



Meet the Teachers



Miss Chelsey has been teaching in the Newburyport Public Preschool Program since 2022. She loves being creative with her students. She loves all dogs and going camping!



Miss Anita has been teaching Preschool for 18 years. She joined the Newburyport Public Preschool Program in 2021. She enjoys spending time with her family and traveling.

What is an *Integrated* Preschool?

The Newburyport Public Schools' Preschool Program:

- **Inclusive, developmentally** appropriate
- Children ages **three to five years old**
- **Wide variety** of backgrounds, skill levels and abilities
- **Peer models**



[Massachusetts Guidelines for Preschool Learning Experiences](#)

[National Common Core Standards](#)

Why Choose Our Preschool?

- Beautiful state of the art facility with bright and expansive **classrooms**, advanced **technology** and equipment, and fun **play areas**!
- All teachers are **licensed** by the State of Massachusetts and hold Master's Degrees in the field of education.
- Classes are **well supported** by 1 teacher and one Instructional Assistant. There are up to 15 students per class. Classrooms are also supported by many **service providers**.
- Students entering our preschool program will transition to their elementary experience for grades K-3 in the **same building** and will have the opportunity to spend up to 6 years at the F.T. Bresnahan School!
- Our **full service model** including specialists, special educators, and classroom teachers provide a rich balance of best practices.



Program Overview

We believe:

- All children have **individual differences** which are best supported through high quality teaching and **differentiated** instruction.
- Young children **learn by doing!** Classrooms are play based with **hands on** meaningful activities.
- A rich variety of **developmentally appropriate** experiences that meet all **learning styles** are integrated in the curriculum through individual, small group and large group activities to help children engage in academic and social experiences.
- Every child will feel **valued, respected** and part of a classroom **community** as well as a greater community in the Bresnahan School.



Learning Through Play

- Professional, respectful and student **focused** staff members
- **Inclusive** environment for all learners
- Universal supports provided to **support** learning for all
- **Visuals** to support classroom routines and expectations
- **Developmentally** appropriate manipulatives
- **Three Cheers for Pre-K** curriculum materials
- **Integrated** model - incorporating speech and language support, OT and PT support
- **Social-emotional** supports, including the Zones of Regulation & Social Thinking



What is the Three Cheers Curriculum?



Three Cheers for PreK curriculum is an early childhood curriculum that helps young children get **ready for Kindergarten**. **Skills-based experiences** and **purposeful play** initiate learning around quality children's literature. This curriculum will use 9 themes to bring literacy, mathematics, science, social studies, social emotional development and fine arts domains to your children.



Take a Look at Our Day

CLASS schedule

Arrival/Greeting/Wash/
Breakfast/Snack
Morning Meeting
Centers
Outdoor Play & Learning
Lunch/Towel Time
Small Groups
Special
Closing Meeting
Dismissal



Program Offered



PROGRAM	DAYS/TIME	TUITION
Multi-Age Preschool All Classes will be mixed age group.	MONDAY-FRIDAY 8:15am-1:00pm	\$ 550 monthly \$ 5,500 annually

Website and Registration Forms

Francis T. Bresnahan Elementary School
333 High Street, Newburyport, MA 01950

Home About Bresnahan News PreK - K Grades 1-3 Our Faculty Parents Contact Us Let's Talk!

You Are Here: Home >> PreK - K >> PreK

- PreK - K
- PreK
 - PreK Programs
 - PreK Registration Process
 - PreK Registration Forms
 - PreK Tuition and Payment
 - PreK Lottery and Wait list
- Kindergarten
- Curriculum PreK - K
- Child Find Screening Notice
- Early Childhood Video
- Early Release Days
- 2016-2017 Information Night

PreK

Integrated Preschool Program



Registration & Lottery Process

- **Returning students or siblings of students**
 - School days between 1/16-1/23 in person
 - dropbox at Door # 1 (10am-2pm)
- **New students**
 - School days between 2/1-2/17 and 2/27-2/28 in person
 - dropbox at Door # 1 (10am-2pm)
- **Lottery** will be held on Friday 3/3
 - Lottery results will be posted Monday 3/6
- **Enrollment** letters will be mailed home and returned by mid-March



Required Forms & Complete Applications

Only **complete** applications will be accepted. The following documents are **required** to obtain a lottery number:

- \$300.00 Registration fee, check or money order made payable to the Newburyport Public Schools (no cash or credit accepted)
- Preschool Application Form
- Your child's birth certificate (copy)
- Your child's most recent health record including lead test, immunization and physical (copy)
- Newburyport Public Schools Enrollment Form
- Certification of Address Form
- Home Language Survey
- Parent Questionnaire



Bresnahan Health Services



Zinta Gulens, RN
Pre-K, K, Gr. 1

Meet our Nurses
2 full time Dept of Ed.
Certified RN School Nurses



Michelle Thivierge, RN
Gr 2-3

Responsibilities:

- Acute and Chronic care for illness and injury
- Mandated Immunization compliance and mandated screening
- Care Coordination
- Development of Individual Health Care Plans/Emergency Health Plans for students with health concerns
- Provide staff training and support

Questions and Tours

Room 138 and Room 137

Health Office Room 127

PT Service Space 216F

